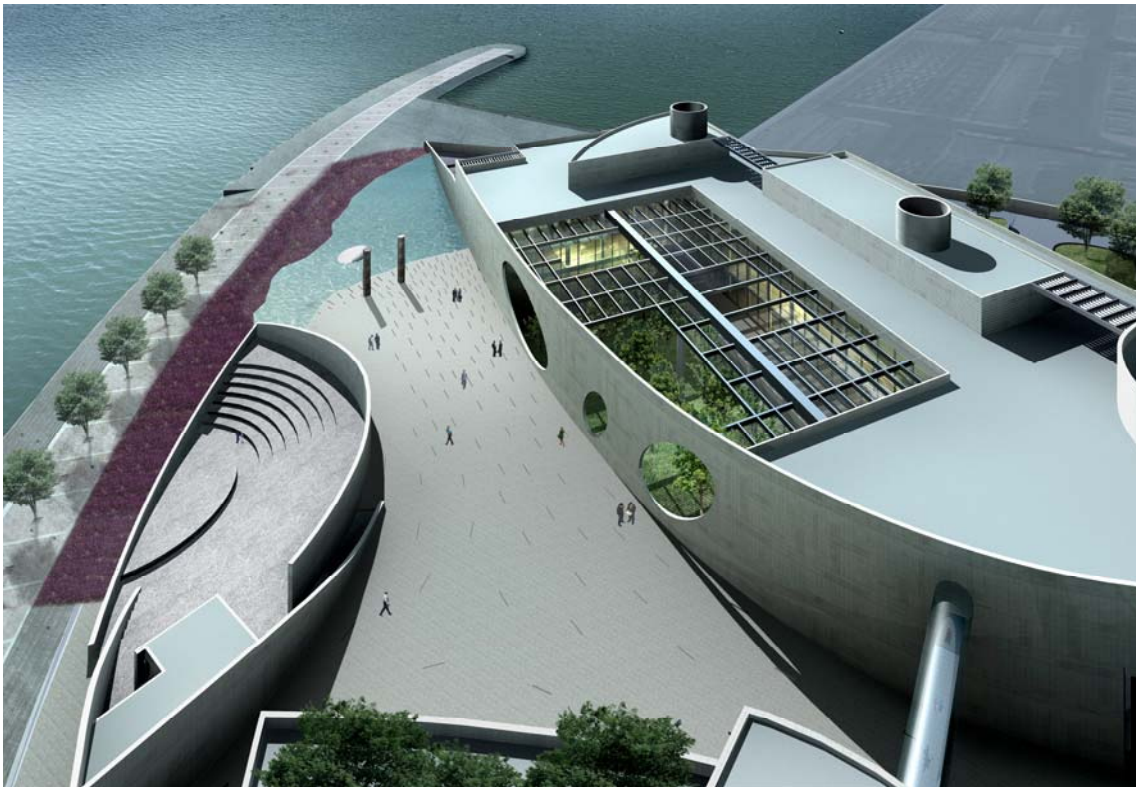




**Champalimaud
Foundation**

Architect Charles Correa Designs Champalimaud Centre



LEONOR BELEZA AND CHARLES CORREA PRESENT CUTTING EDGE RESEARCH CENTRE IN LISBON

The Indian architect Charles Correa is the designer of the “**Champalimaud Centre for the Unknown**”. The Lisbon Centre will be a major scientific centre in cancer and neurosciences. The centre was presented by Charles Correa and Leonor Beleza, the President of the Foundation, in Lisbon on November 16th.

The Champalimaud Research Centre will be a multidisciplinary centre for translational research of excellence, with the best

possible conditions to attract and retain the best researchers, academics and medical doctors from all over the world in the fields of neurosciences and oncology. The Champalimaud Research Centre will include laboratories for basic and clinical research, an ambulatory care centre, a vivarium, an auditorium, conference rooms and other teaching facilities and also an exhibition area.

The state of the art facilities for basic and clinical research and for teaching will foster front line research in molecular biology, genetics, immunology, neurosciences and behaviour, and oncology, as well as post-graduate and doctorate programmes, and the diagnosis and treatment of neurological

and cancer patients.

The Champalimaud Research Centre will be located in a beautiful site of 60,000m² in the most exclusive zone of Lisbon, next to the magnificent Tower of Belém. This area, where the river Tagus meets the Atlantic Ocean, is of great historical significance as the great Portuguese pioneers sailed from here to discover the "unknown" in the XV and XVI centuries. The presence of the Champalimaud Research Centre will leverage this historical heritage by creating an inspirational link between the discoveries of yesteryear and the epic adventure of scientific research.

In order to honour the historical relevance of the site and to promote the relationship of the citizens with the sea and the "unknown", the Champalimaud Research Centre will allow free access of the public to the waterfront through wide landscaped areas around its buildings.

The project of the Champalimaud Research Centre by the architect Charles Correa expresses and reinforces the objectives of fostering scientific excellence and of celebrating the discoveries, while generously allowing the access and enjoyment of the area to the general public.

The Champalimaud Centre comprises 3 buildings:

- Building A, that houses the diagnostic and treatment units in the lower levels and the

basic research laboratories in the upper levels - read more at

<http://www.fchampalimaud.org/newsroom/detail/cf-research-institute-building-a/> ;

- Building B has the Auditorium, the Exhibition Area, and a Restaurant on the entrance level, and on the upper level the offices of the Champalimaud Foundation that are connected to building A by an elegant glass bridge. Read more at <http://www.fchampalimaud.org/newsroom/detail/cf-institute-building-b/> .

- Building C is an open air amphitheatre, facing the river. Read more at <http://www.fchampalimaud.org/newsroom/detail/cf-institute-building-c/> .

The buildings are arranged in such a way to create a 125 m long pedestrian pathway leading diagonally across the site, towards the open seas. This pathway is ramped up so that when walking upwards one can only see the sky ahead. At the top of the ramp there are two stone monoliths, straight from the quarry. When one reaches the highest point, one sees a large body of water which apparently connects to the ocean beyond. In the centre of the water body, just below the surface, there is an oval shaped stainless steel object, slightly convex so that it reflects the blue sky and the passing clouds above; it could be anything - the back of a turtle, a tropical island, a treasure chest - all included in the mythic adventure that inspired the discoveries.



Aravind Receives 1 Million Euro Champalimaud Vision Award



José Socrates, Prime Minister of the Portuguese Republic, Aníbal Cavaco Silva, President of the Portuguese Republic, and Leonor Belezza, President of the Champalimaud Foundation, during the award ceremony.

On the 7th of September the inaugural António Champalimaud Vision Award Ceremony was held in Lisbon, Portugal. The 1 million Euro award was presented to the Aravind Eye Care System from Madurai, India. The award ceremony featured speeches from Leonor Belezza, President of the Champalimaud Foundation, Professor Alfred Sommer, President of the Jury, Dr Nam, Chairman of the Aravind Eye Care System, and Dr Aníbal Cavaco Silva, President of the Portuguese Republic. A documentary film highlighting the work of the award candidates in the fight against blindness was also shown.

Established in 1976 with the mission of eliminating needless blindness, Aravind is the largest and most productive eye care facility in the world and is based in Madurai, India. Taking its compassionate services to the doorstep of rural India, Aravind's stunningly effective strategies vaulted barriers of distance, poverty and ignorance to create a self-sustaining system. From April 2006 to March 2007, including the work done in the Managed Eye Hospitals, over 2.3 million out

patients were treated and over 270,444 surgeries were performed.

Today the Aravind Eye Care System encompasses five hospitals, a manufacturing centre for ophthalmic products, an international research foundation and a resource and training centre that is revolutionising hundreds of eye care programmes across the developing world. Such is the success of Aravind that it was recently the subject of a Harvard Case Study.



Head of the award jury, Professor Alfred Sommer, speaks during the ceremony.

The António Champalimaud Vision Award has the support of Vision 2020 – The Right To Sight, a global initiative for the prevention of blindness launched in association with the UN's World Health Organisation. The award is given alternately between contributions to overall vision research and contributions to the alleviation of visual problems, primarily in developing countries. The recipients of the award are productive research groups rather than single individuals, and this may involve groups from more than one institution or discipline.

In 2008 the Award will recognise ground-breaking discoveries in the lab that enhance our knowledge or understanding of vision. Further information can be found at <http://www.fchampalimaud.org/vision-award/>.



Dr Namperumalsamy, from Aravind, with the Award Trophy

Champalimaud Neuroscience Programme Begins

Work has commenced in the Champalimaud Foundation Neuroscience Programme in Lisbon. The programme is being led by Zachary Mainen, formerly of Cold Spring Harbor Laboratory in the USA, who joins the Champalimaud Foundation as a Principal Investigator. Dr Mainen is joined in the Neuroscience Programme by Rui Costa and Marta Moita.

The CF Neuroscience Programme aims to unravel the neural basis of behaviour. In the past few decades an enormous effort has been directed towards the development of neurosciences worldwide. Nonetheless, little progress has been achieved in the understanding of both normal and pathologic behaviour. The CF Researchers are convinced that there are now sufficient conceptual and technological tools to make

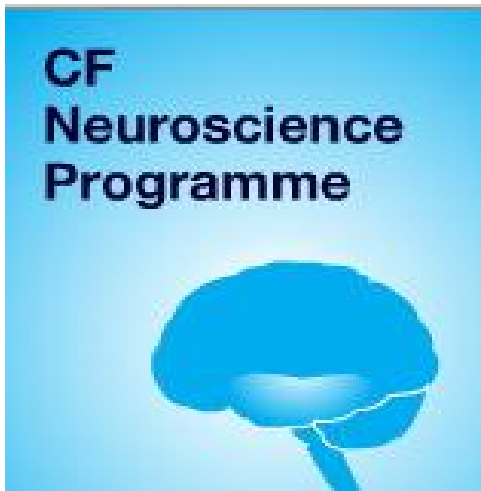
important breakthroughs in the understanding of the neural basis of behaviour. Thus, they believe that investing in basic research in this field will significantly impact on our understanding of brain function, which will in turn contribute to the understanding and possible treatment of brain dysfunction.

Doctorate Programme Launched

In September the first Ph.D. students joined the CF Neuroscience Programme. The doctoral programme aims to provide research training at the highest level in Neuroscience. In particular, the goal is to provide students with the capacity of engaging in integrative research aimed at studying the brain and behaviour at the systems level. Crossing of different

experimental approaches and different research areas are encouraged. Students are expected to develop critical and creative thought that will lead to innovative research.

For the time being, students will be based at the IGC (Instituto Gulbenkian de Ciência) before the Programme moves to the Champalimaud Research Centre in 2010.



CF Neuroscience Meetings

In September and October the Champalimaud Foundation hosted two international neuroscience workshops in Portugal. The first meeting took place between the 4th and 7th of September and focused on the neural basis of reward and decision making. Researchers from all over North America joined the CF Neuroscience Programme's own Principal Investigators to participate in interactive discussions on current issues in this area.

On October the 4th Lisbon played host to a three day meeting on "Theoretical and Experimental Perspectives on Serotonin Function". There was a truly global feel to the meeting with delegates from all over the world. The purpose of the workshop was to bring together researchers from a wide variety of perspectives to exchange data and ideas on this most mysterious of neurotransmitters and to contemplate a unifying theory of serotonin function.

Media contact:

Vitor Cunha

+351 96 6619794

vcunha@jlma.pt

www.fchampalimaud.org
